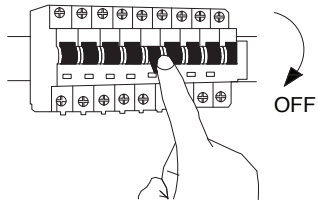
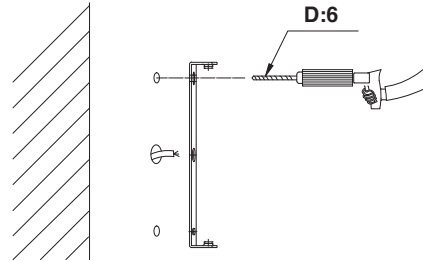


NOVA LUCE

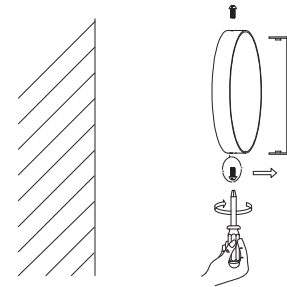
9186938



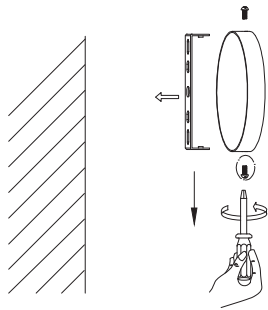
1. Turn off the general switch



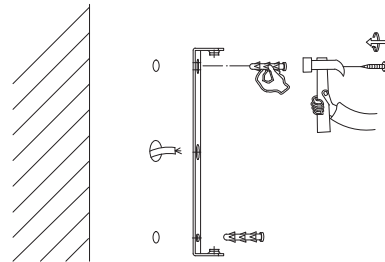
4. Open holes with the drill.



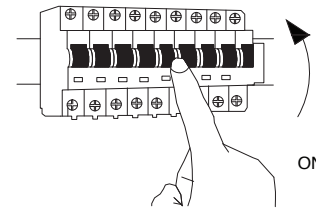
7. Screw the side screws into the metal base.



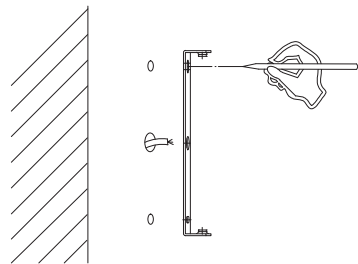
2. Unscrew the screws and remove
The metal base.



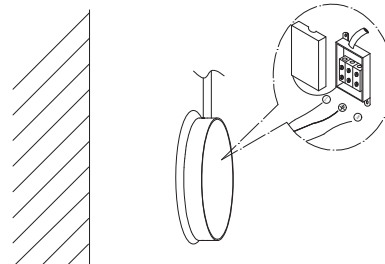
5. Put the washers and screws and
Tighten the screws.



8. Turn on the general switch.



3. Mark with a pencil on the wall to
Open holes.



6. Connect the wires.

1. This light fitting operates at a normal supply voltage of 220-240V.
2. When changing the bulb or fuses, always switch off at the mains
and allow the old bulb to cool down before handling.

