

NOVA LUCE

LED water proof light Installation and Operation Manual

Please read the following instructions carefully to ensure that mounting operation will be carried out in the right way .These instructions should be properly preserved for future reference.

Specifications

220-240Vac

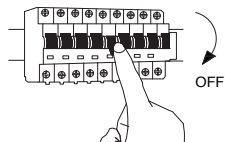
50-60Hz

IP65

Safety tips

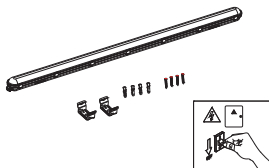
1. Use H07RN-F, 3x1.5mm² rubber cable.
2. Luminaire should be installed by authorized electrician only acc. to national wiring rules. If the external flexible cable or cord of this luminaire is damaged, it shall be exclusively replaced by the manufacturer or his service agent or similar qualified person in order to avoid a hazard.
3. The power supply must be deactivated prior to assembly, maintenance, exchanging the bulb or cleaning processes. Remove the fuse or switch the fuse to OFF and secure from reactivation.
4. Screw the gland.
5. Connect brown wire(L) to terminal L, blue wire (N) to terminal N, connect the grounding wire and green/yellow fixture wire .
6. terminal box installed back, the terminal box must be installed the correct position.

1



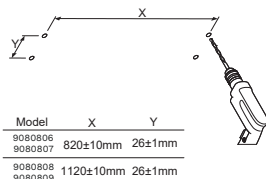
Turn off the general switch

2



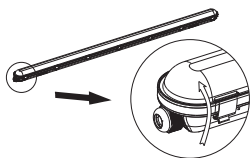
Parts

3



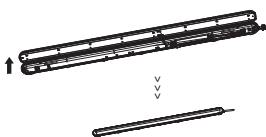
Drill holes

4



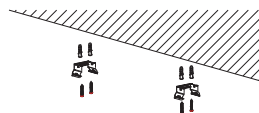
Open the product

5



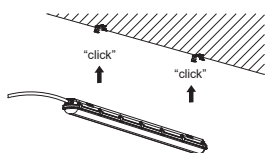
Connect wires & close the cap

6



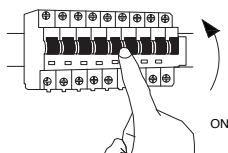
Drill holes apply plastic anchors with screws

7



Click the product in to place

8



Turn on the general switch

