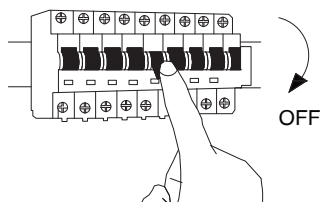


NOVA LUCE

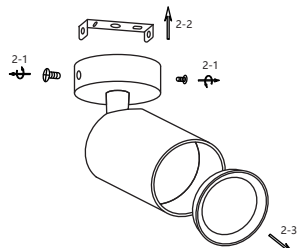
9011525, 9011526

1



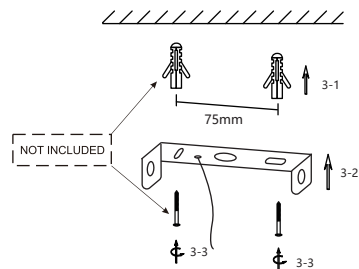
Turn off the general switch

2



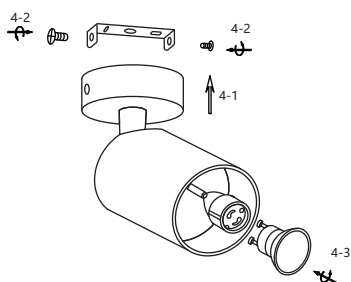
Dismantle parts by untying screws & remove the cap

3



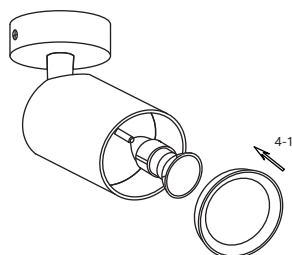
Mark & drill holes,
apply plastic anchors
Tie up screws to fix it in place

4



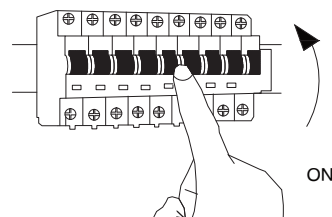
Fix it into place
by tying up side screws
Apply the bulb

5



Fix it into place by pressing
the brackets together

6



Turn on the general switch

7

