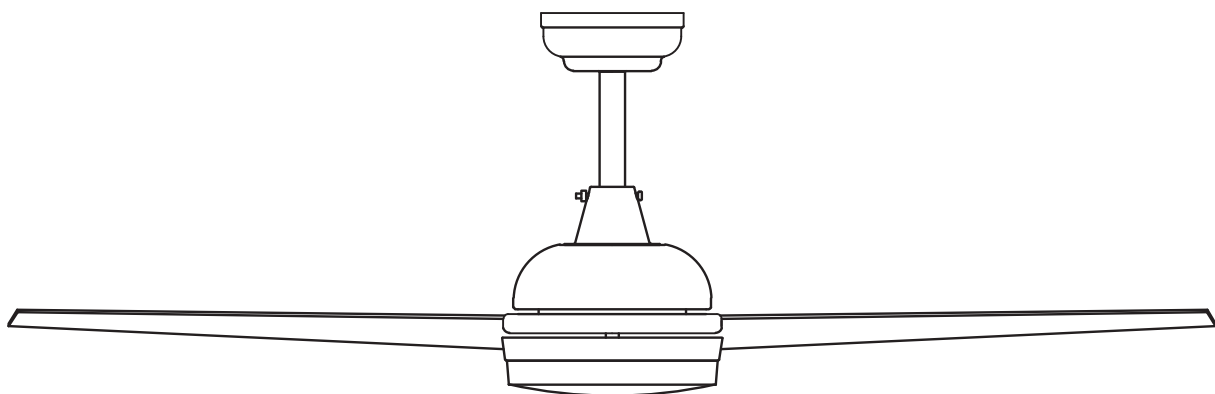
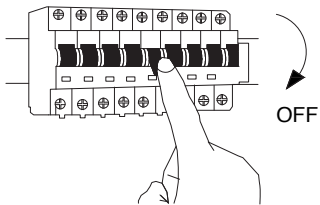


NOVA LUCE

9953198

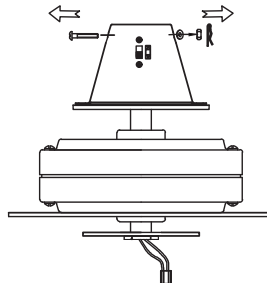


1



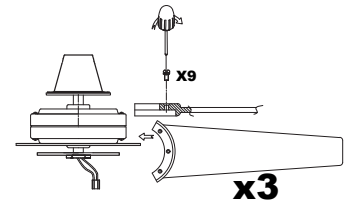
Turn off the general switch

2



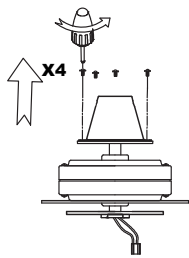
Remove the nuts

3



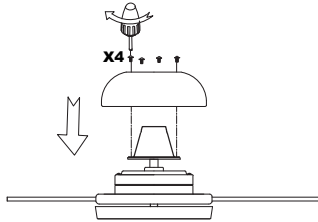
Apply the screws with the blades

4



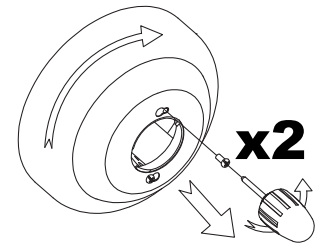
Apply the screws

5



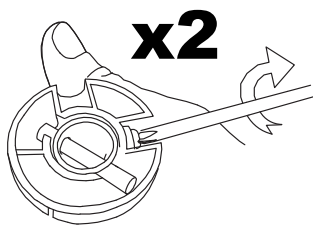
Apply the top cap

6



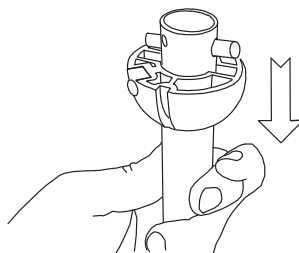
Remove the element

7



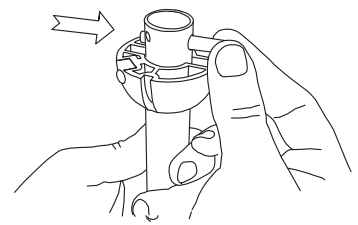
Rotate in order to dismantle

8

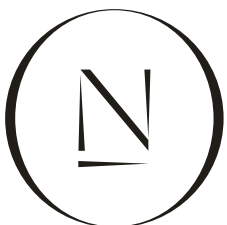


Remove the cover

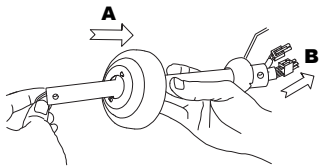
9



Adjust

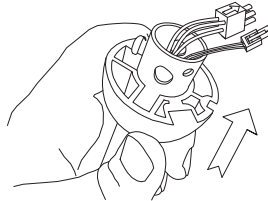


10



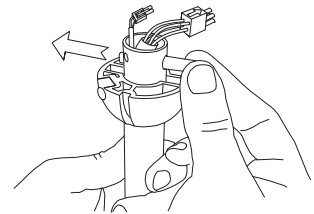
Move the cover on top

11



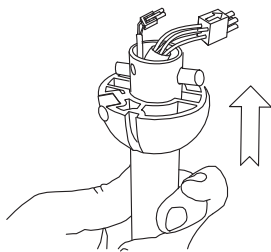
Apply the cover in place

12



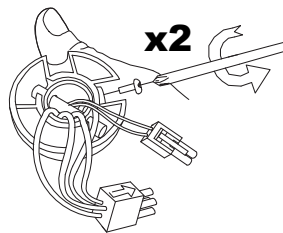
Adjust

13



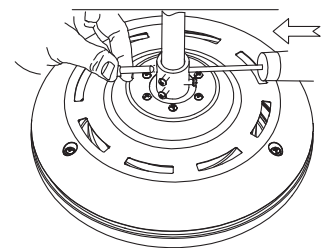
Put it in place

14



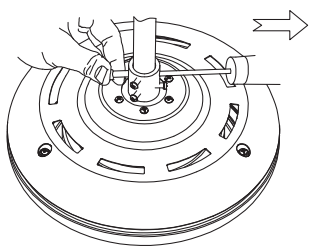
Apply the screw

15



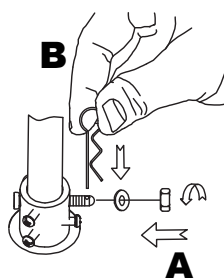
Place the nut in place

16



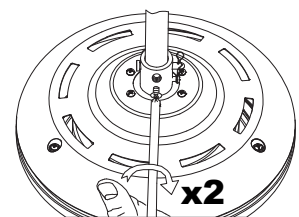
Place the nut in place

17



Make it stable

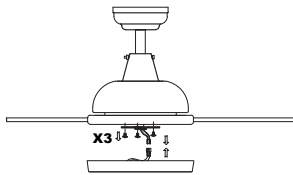
18



Apply the screw

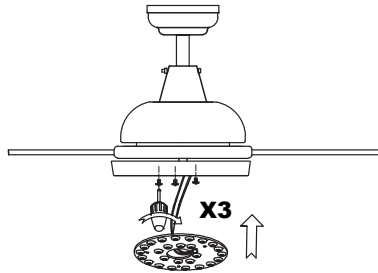


20



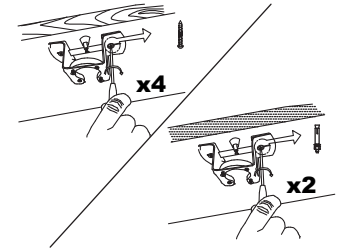
Connect the wires

21



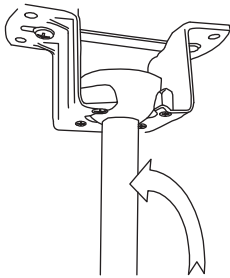
Apply the screws

22



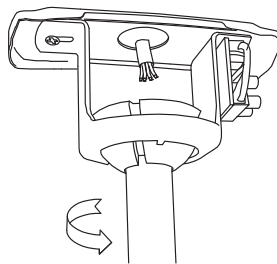
Apply the screws & the nuts

23



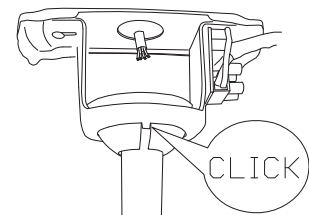
Adjust

24



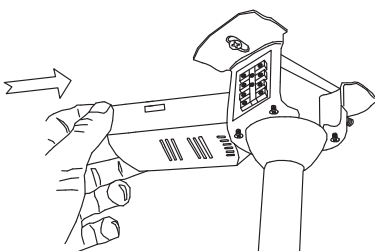
Rotate

25



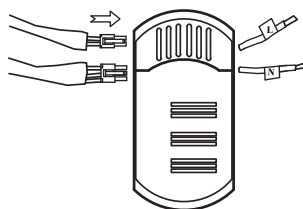
Rotate until it clicks

26



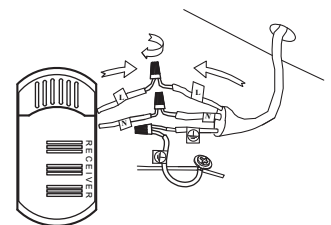
Apply the receiver in place

27



Connect the wires

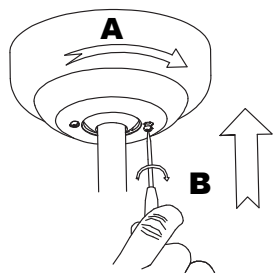
28



Fix the connection

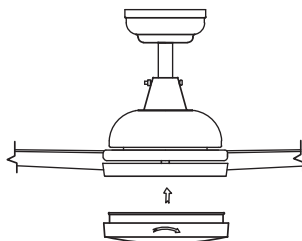


29



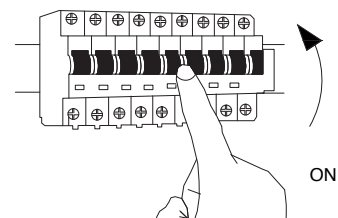
Apply the screws

30

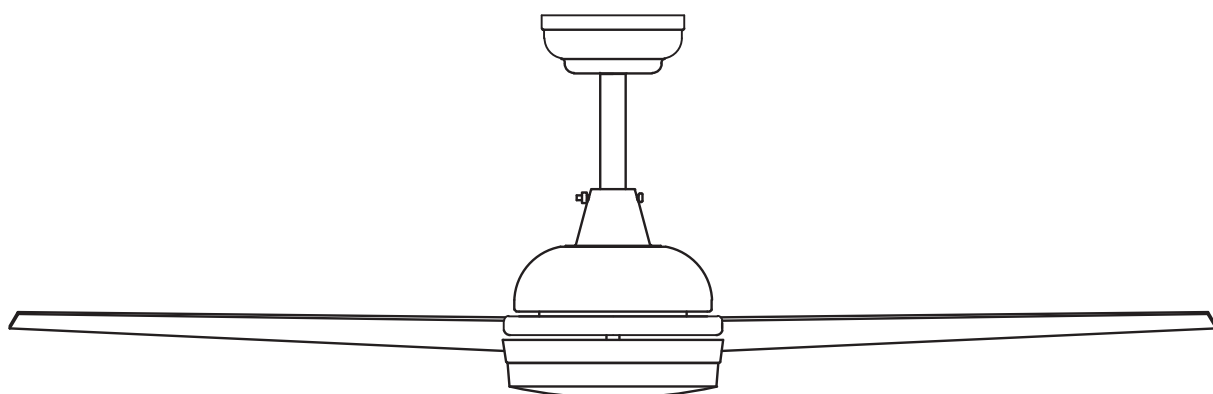


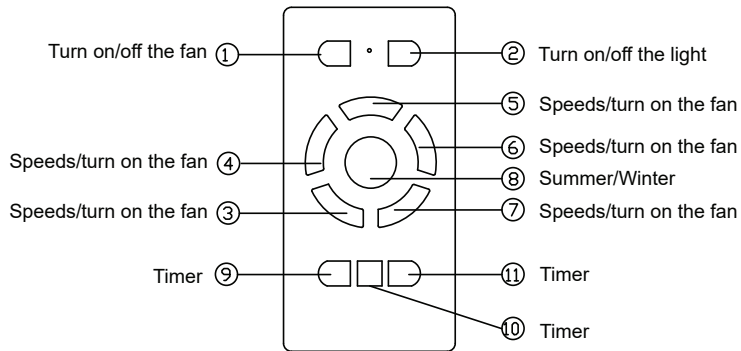
Apply the element

31

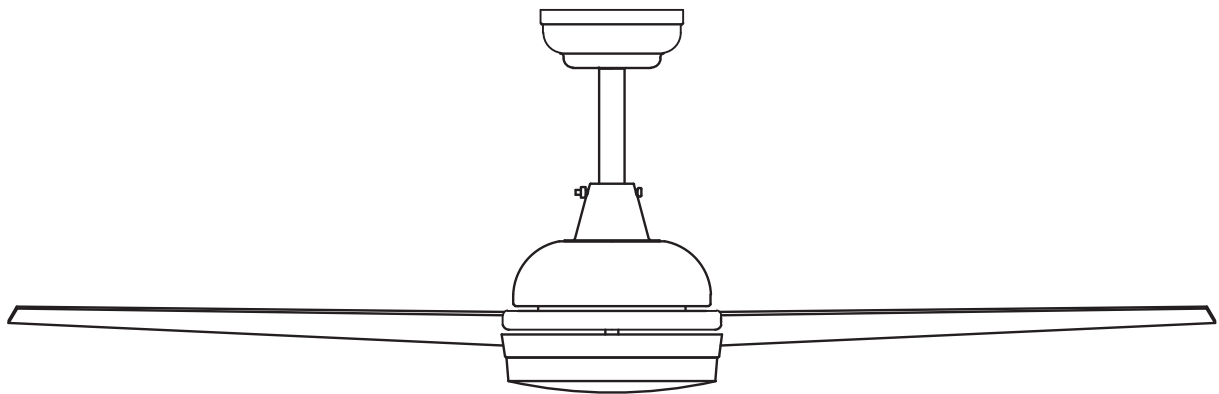


Turn on the general switch

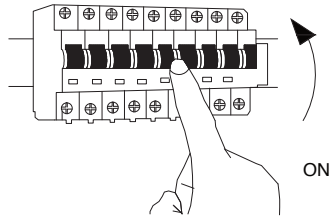




①	Fan on/off
②	
③	
④	
⑤	
⑥	
⑦	
⑧	
⑨	
⑩	
⑪	

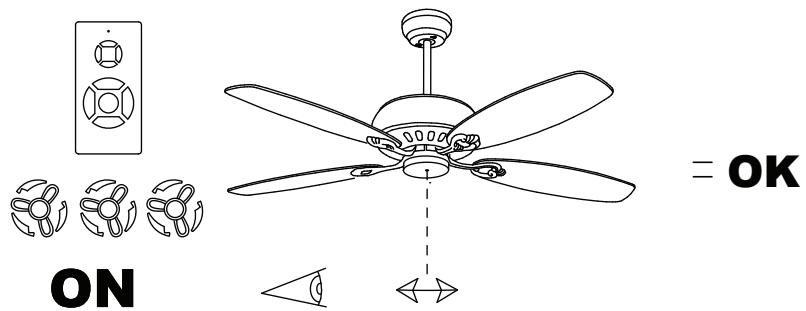


1



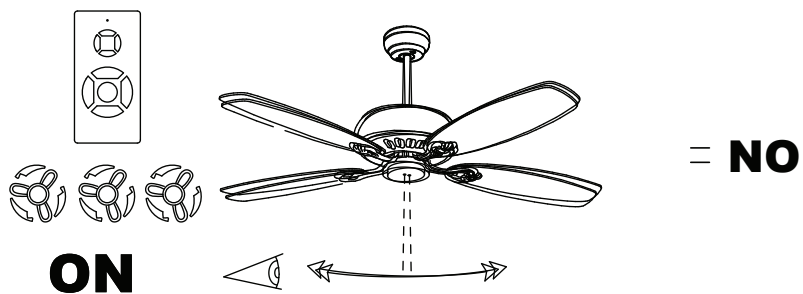
Turn on the general switch

2

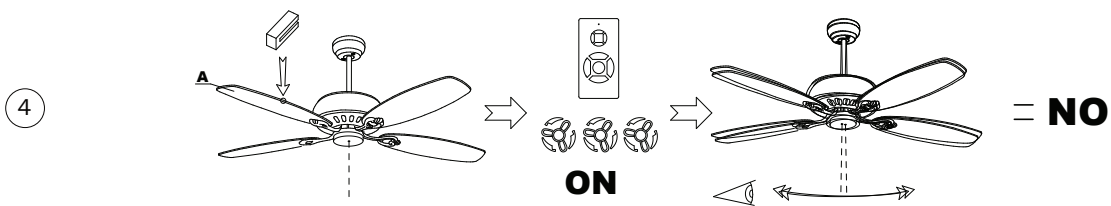
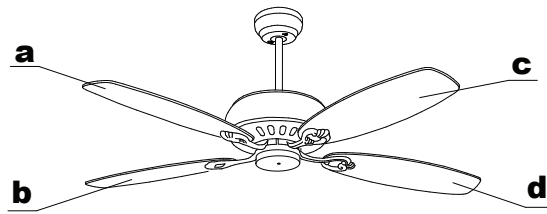


Observe its movement from a distance

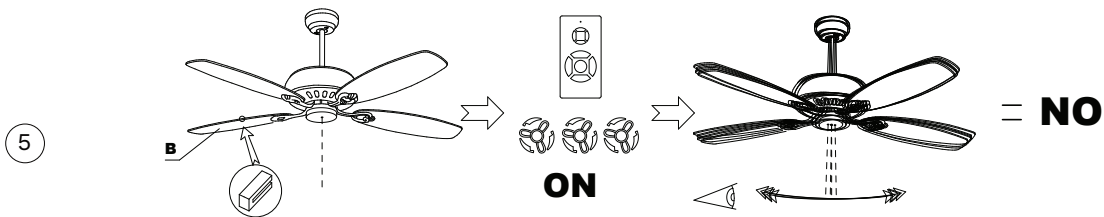
3



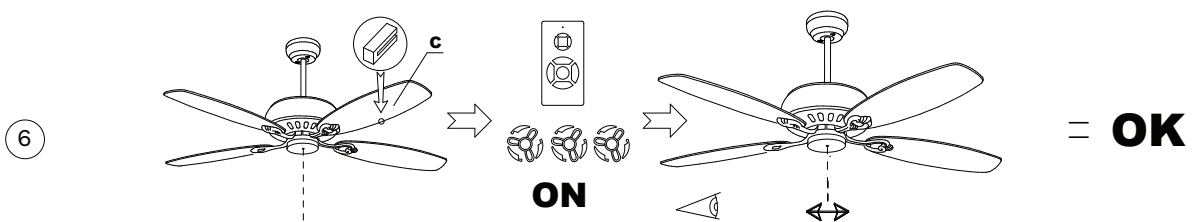
If it appears to be unstable, it should be balanced accordingly using the equilibrium.



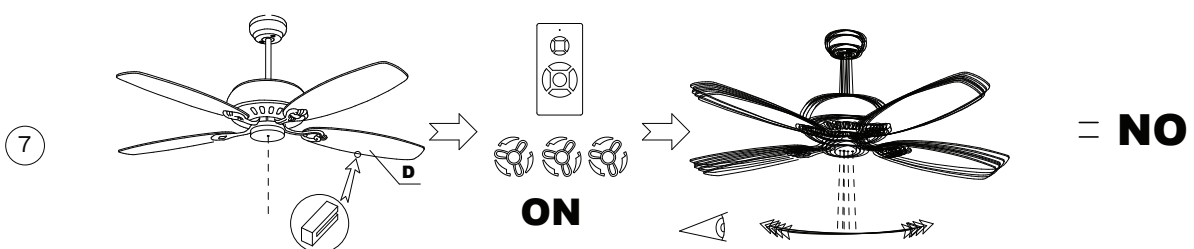
Place the equilibrium on the center of the A Wing and turn on the fan in medium volume. Observe from a safe distance & if it appears non stable, it should be balanced.



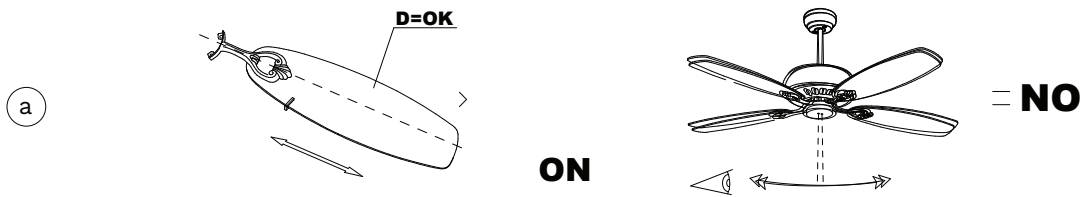
Repeat the process with B wing. If it appears non stable, it should be balanced.



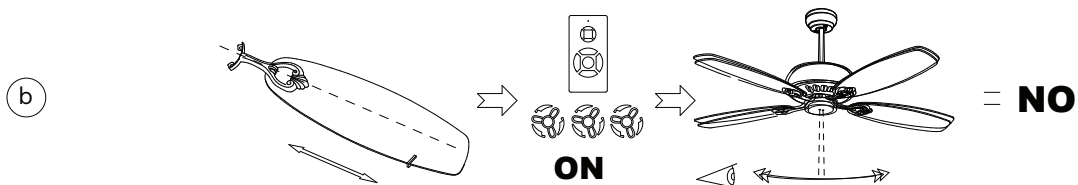
Repeat the process with C wing. If it appears non stable, it should be balanced.



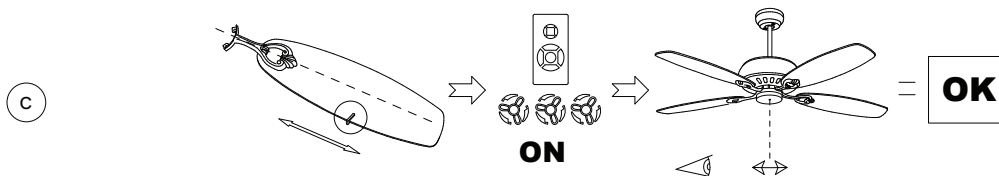
Repeat the process with D wing. If it appears non stable, it should be balanced.



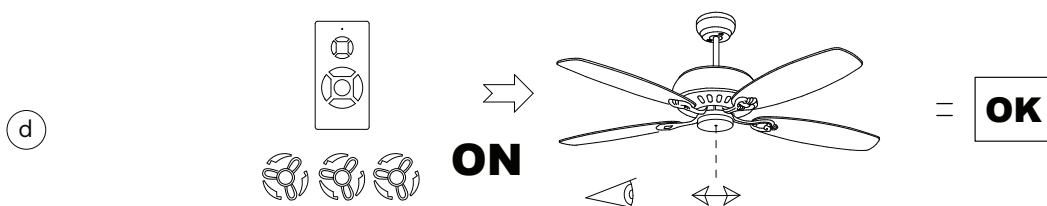
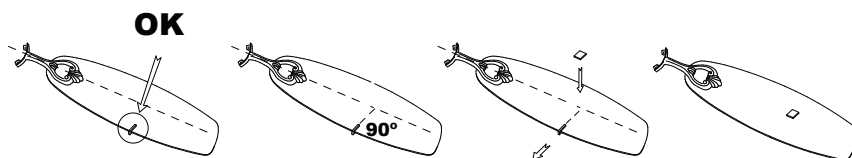
When D wing appears to be stable, make sure to place the equilibrium on the right place.



If the equilibrium is near the edge, when you turn on the fan, it will appear unstable.



When the equilibrium is in the middle of the wing, when you turn on the fan, it should be stable.



Turn on the fan & if it appears stable on the center, Your installation is ready for use.