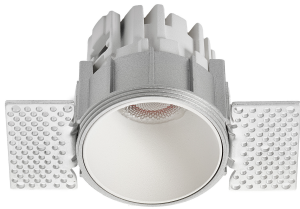


# NOVA LUCE

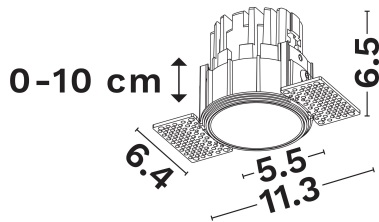
## PRODUCT DATASHEET

Version: 001

### PRODUCT PHOTOGRAPH



### TECHNICAL DRAWING



### COMPATIBLE WITH

— On/Off Driver: 9020171

— Triac Driver: 9844019

— Dali Driver: 9621523

### GENERAL INFORMATION

|                         |            |
|-------------------------|------------|
| Product Code            | 9030655    |
| Product Category        | Downlights |
| Product Family          | Talus      |
| Mounting Location       | Ceiling    |
| Application Environment | Indoor     |

### DIMENSION & WEIGHT

|              |                    |
|--------------|--------------------|
| LxWxH (cm)   | L:5.5 W:11.3 H:6.5 |
| Cut out (cm) | 6,8                |
| Weight (Kgr) | N/A                |

### MATERIAL & COLOR

|                |           |
|----------------|-----------|
| Product Color  | White     |
| Body Material  | Aluminium |
| Cover Material | N/A       |

### APPLICATION & MOUNTING

|                            |            |
|----------------------------|------------|
| Ambient Working Temp.      | 45 C       |
| Type of Protection         | IP44       |
| Protection Class IK        | IK03       |
| Dimmable                   | Yes        |
| Type of Dimming (Optional) | Triac/Dali |
| Mounting type              | Trimless   |
| Mounting Depth (cm)        | Ceiling    |
| Led Module Replaceable     | No         |
| Light Source               | Led        |
| Adjustable                 | No         |

NOVA LUCE S.A

Schimatari Viotias  
32009, Greece

+30 22620 58 121  
+30 22620 56 743

info@novaluce.com  
www.novaluce.com



## ELECTRICAL DATA

|                         |                |
|-------------------------|----------------|
| Power (Nominal)         | <b>10</b>      |
| Input voltage (Nominal) | <b>19Vdc</b>   |
| Mains Frequency         | <b>50/60Hz</b> |
| Output voltage          | <b>19Vdc</b>   |
| Output Current          | <b>500mA</b>   |
| Power Factor            | <b>0.55</b>    |
| Efficiency              | <b>&gt;83%</b> |
| SVM                     | <b>&lt;0.4</b> |
| Pst                     | <b>&lt;1</b>   |
| Class                   | <b>III</b>     |

## PHOTOMETRICAL DATA

|                           |                   |
|---------------------------|-------------------|
| Luminous Flux             | <b>716</b>        |
| Luminous Efficacy         | <b>71.6</b>       |
| Color Temperature         | <b>3000</b>       |
| Light Color (Designation) | <b>Warm White</b> |
| CRI                       | <b>97</b>         |
| SDCM                      | <b>&lt;3</b>      |
| Beam Angle                | <b>36</b>         |
| UGR                       | <b>N/A</b>        |

## LIFESPAN

|          |              |
|----------|--------------|
| Lifetime | <b>50000</b> |
|----------|--------------|

## CERTIFICATES

|              |                 |
|--------------|-----------------|
| Certificates | <b>CE, UKCA</b> |
|--------------|-----------------|

## WARRANTY

|          |                |
|----------|----------------|
| Warranty | <b>5 Years</b> |
|----------|----------------|

## LIGHT DISTRIBUTION

