

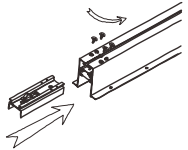
NOVA LUCE

INSTALL

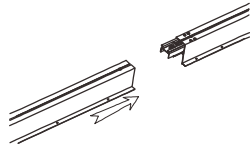
9060950

Example of corner installation

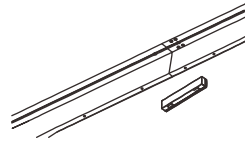
8252015



Insert mechanical connector & tie up screws

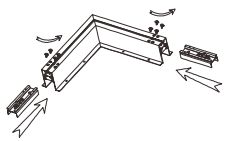


Click them together

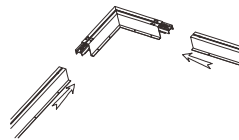


Connect electrical connector

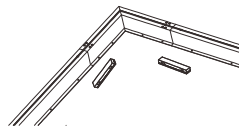
8252011/ 8252013



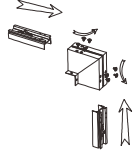
Insert mechanical connectors & tie up screws



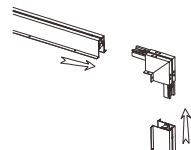
Click them together



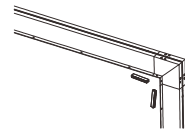
Connect electrical connectors



Assemble parts together by applying screws

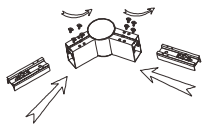


Click them together

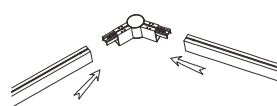


Connect electrical connectors

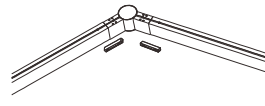
8252025



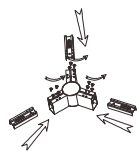
Assemble parts together by applying screws



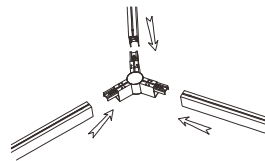
Click them together



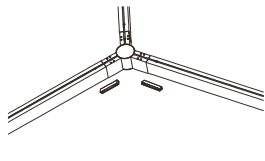
Connect electrical connectors



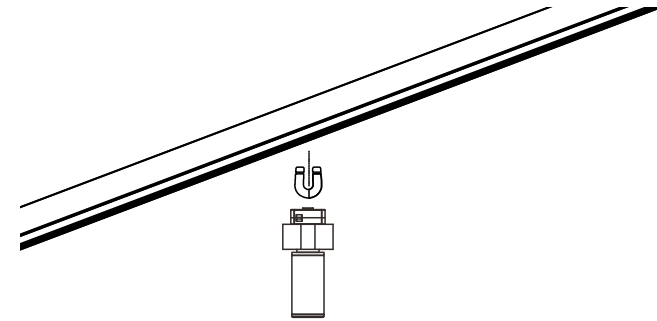
Assemble parts together by applying screws



Click them together

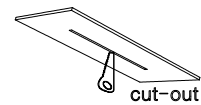


Connect electrical connectors



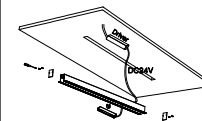
Example of recessed installation

8252002 / 9252005



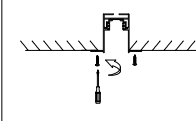
Step:1

Create a CutOut



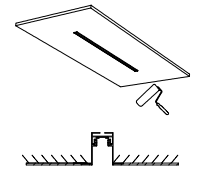
Step:2

Assemble parts by tying up screws
Click the connector on the track



Step:3

Tie up screws



Step:4

Apply a sealer

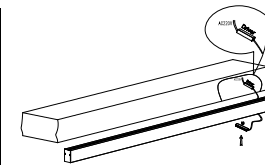
Example of surface installation

8252001 / 8254411



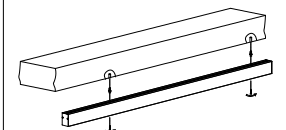
Step:1

Assemble parts by tying up screws



Step:2

Connect wires & click on the connector



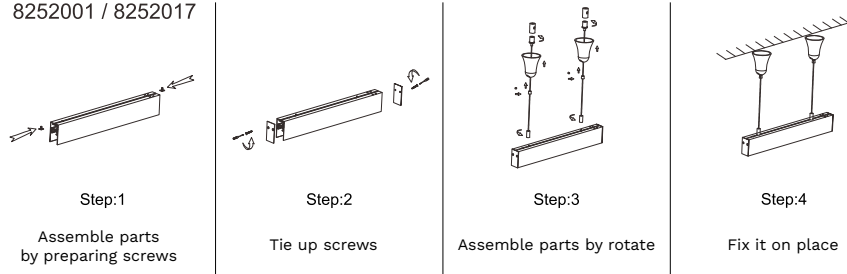
Step:3

Tie up screws

NOVA LUCE

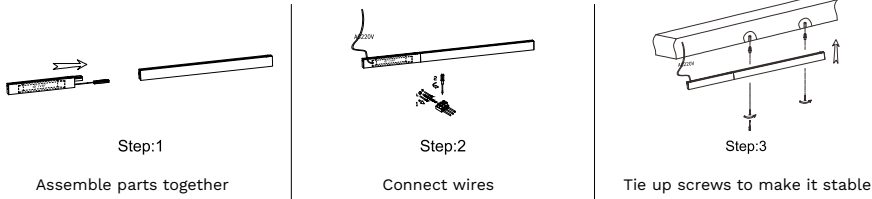
Example of hanging installation

8252001 / 8252017



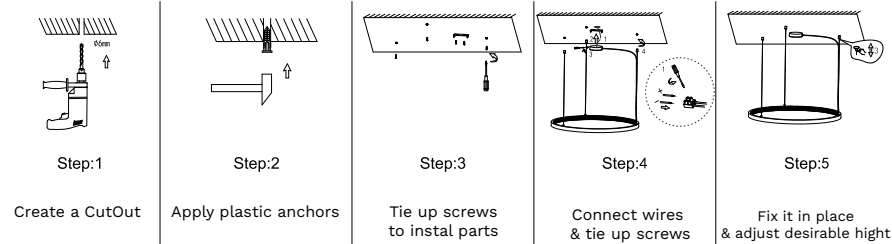
Example of surface installation

8252037 / 80252038

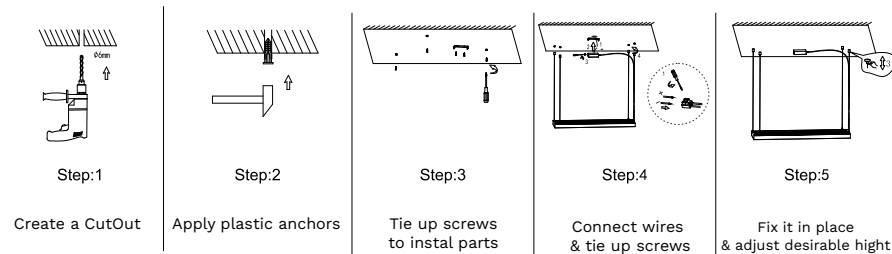


Example of hanging installation

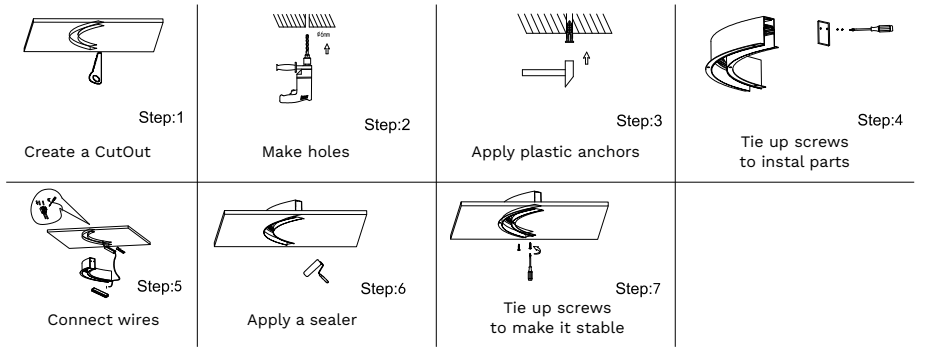
8925201



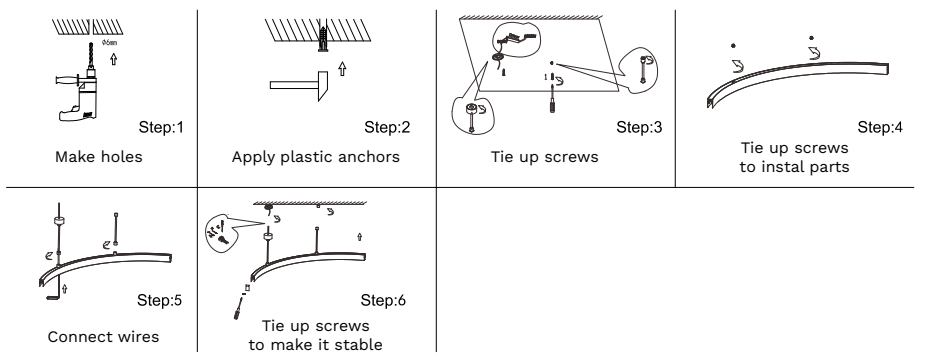
Example of hanging installation



Example of recessed installation



Example of hanging installation



Example of recessed installation

