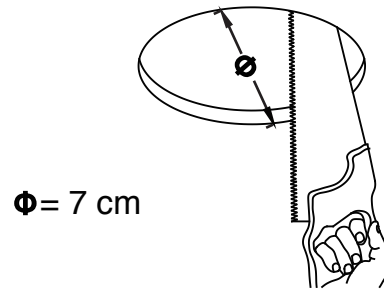
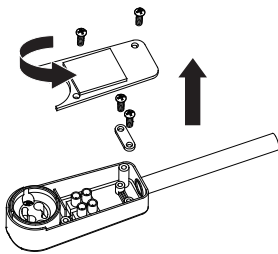


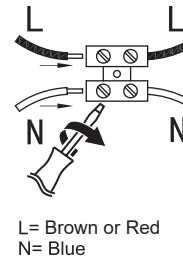
1. Turn off the general switch



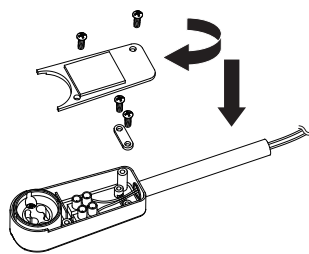
2. Cut off the hole according to dimensions given



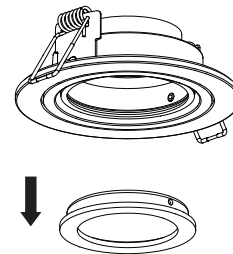
3. Remove the lid by untidying up the screws



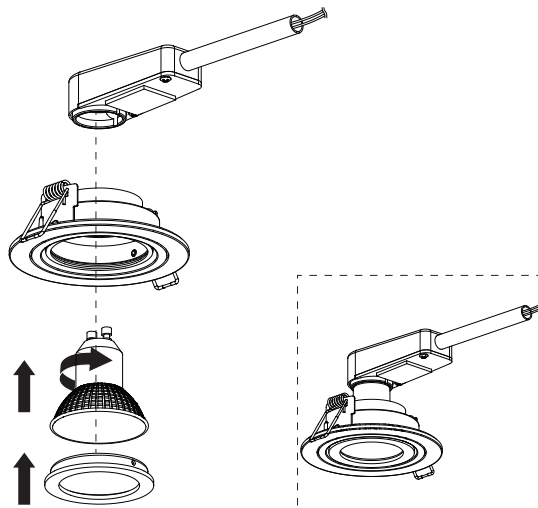
4. Connect wires



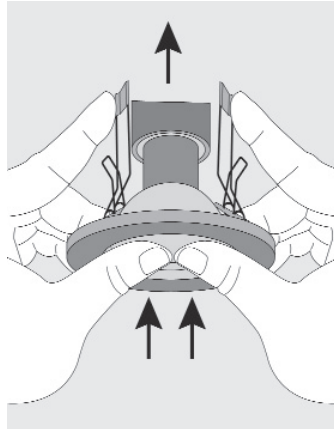
5. Apply the lid by tidying up the screws



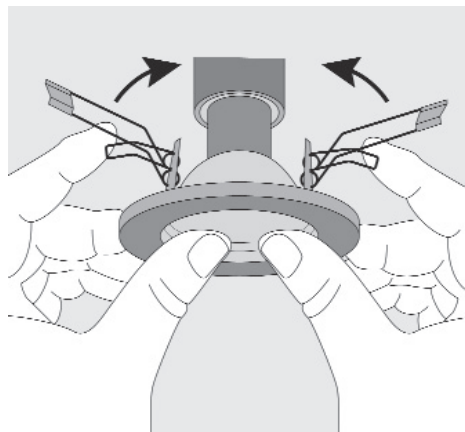
6. Remove the lid



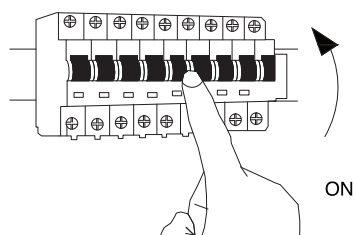
7. Insert the light & apply the lid by tidying it up



8. Insert the product into the wall by pressing the sides together



9. Pull the sides downside, to make it stable



10. Turn on the general switch