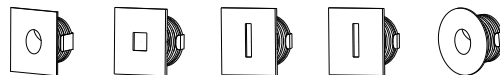


**WARNING!**

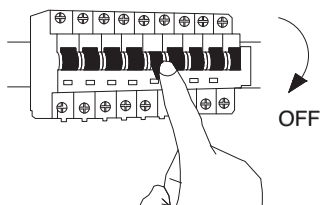
Please read the following instructions carefully

**IMPORTANT:**

Although LED runs on a very low voltage, always cut off the power supply before installing the LED light or subjecting it to maintenance. Unauthorized alterations or tampering of the product will invalidate all the conditions of guarantee.

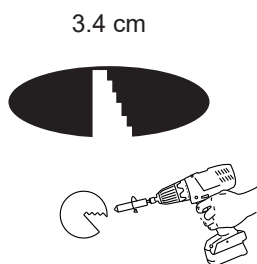


①



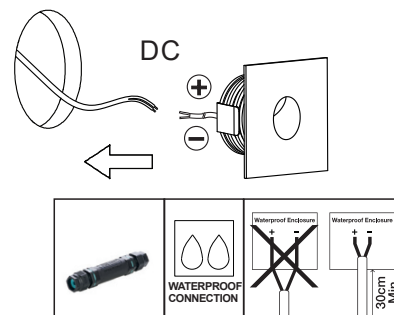
Turn off the general switch

②



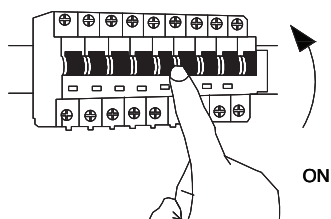
Create a CutOut

③



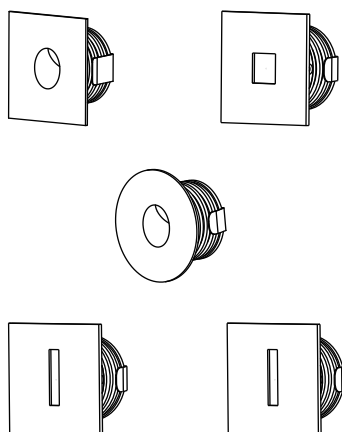
Expose & connect wires

④



Turn on the general switch

⑤



- A. The installation must be done by competent electricians.
- B. Product can not be modified
- C. Make sure the power has been switched off before installation
- D. The product is a Class III luminaire and shall be connected with a current driver according to the specifications in the above sheet
- E. The connection of the luminaire should be standard with 0.5mm<sup>2</sup>-1.5mm<sup>2</sup> conductor.
- F. The specification for the driver means determines on the voltage and the maximum number of luminaires per loop
- G. Power should never be regulated on the secondary side
- H. See the installations on the image

